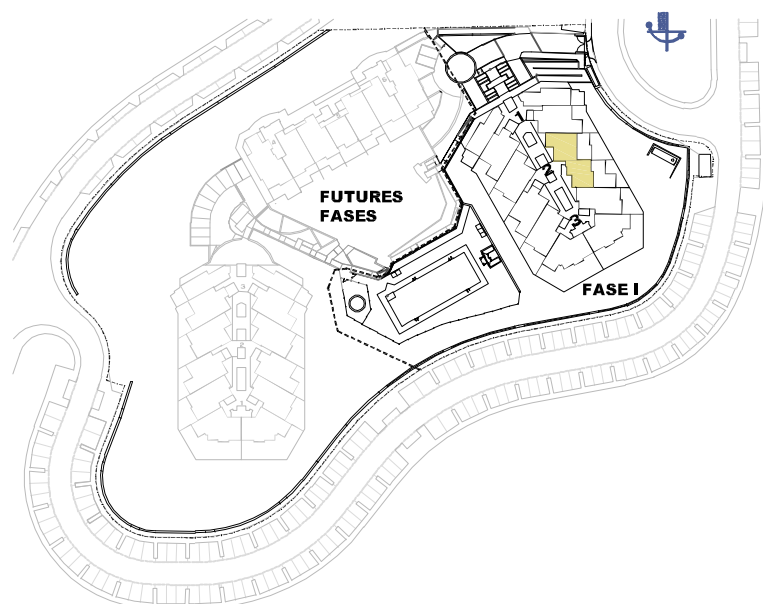


ISEA
CALACEITE

APARTMENT 3241

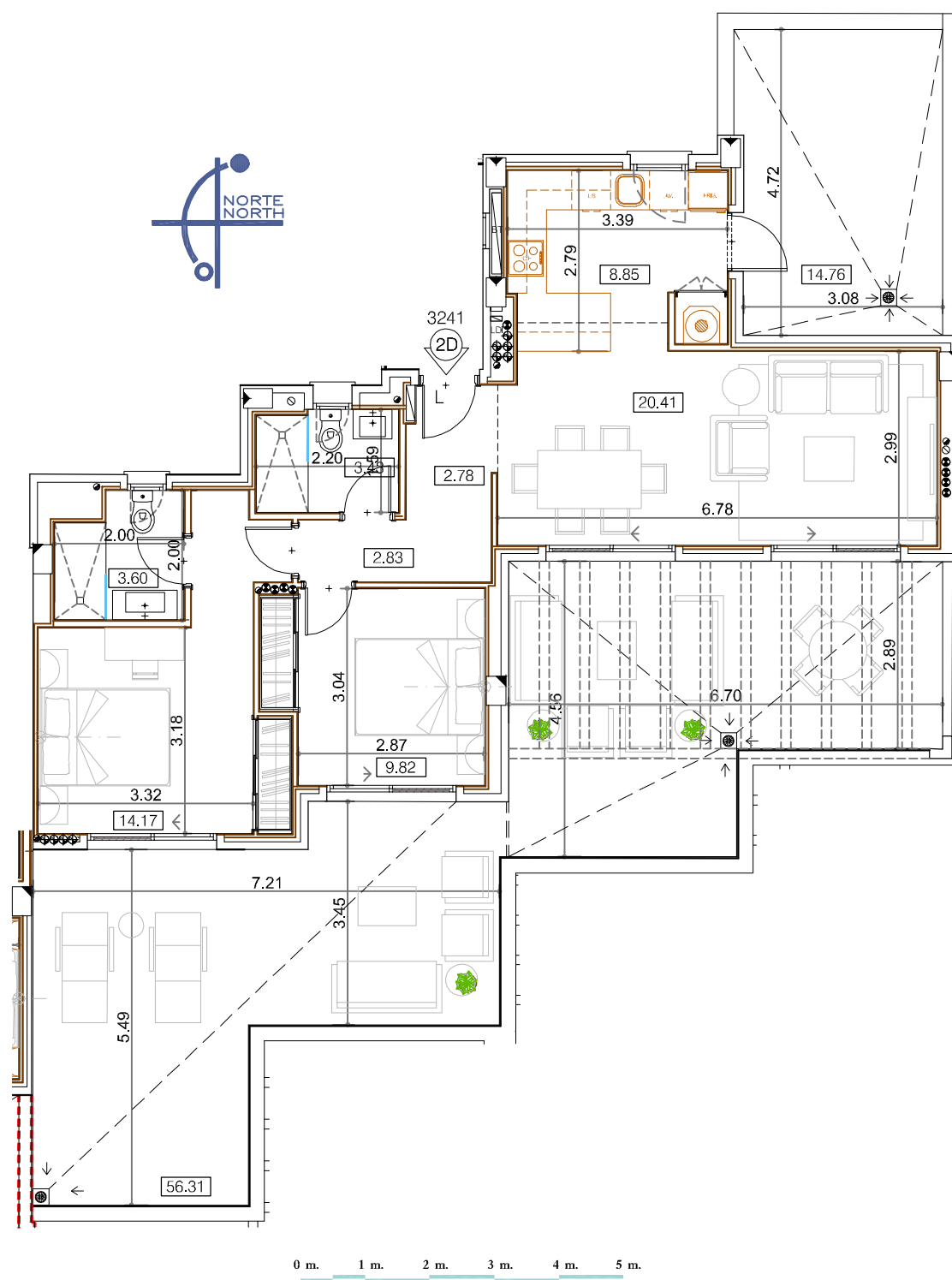
TYPE L / 2 BEDROOMS



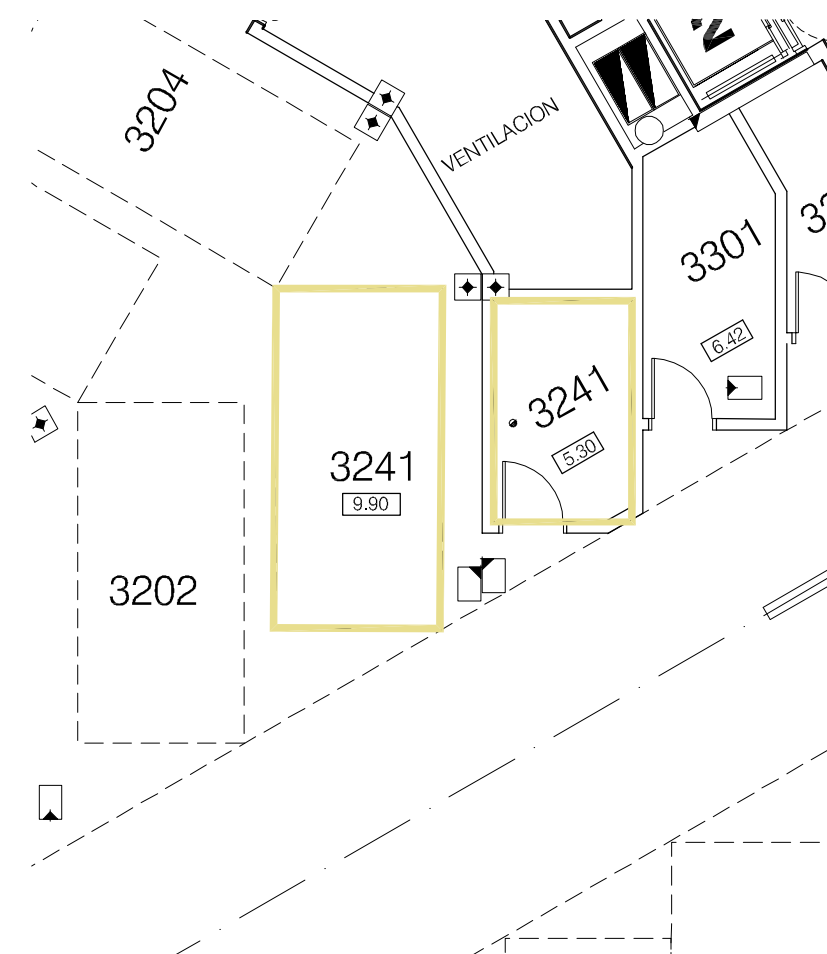
Block 3 / Stair Label 2 / Floor 4 / Door 3241

According to decree 218/05

Enclosed Built Area Sup. Construida Cerrada	80,87 sqm/m2
Terrace Built Area Sup. Construida Terraza	77,97 sqm/m2
Common Areas Built Area Sup. Construida Zona Común	10,31 sqm/m2
Usable Area Sup. Util Vivienda	72,48 sqm/m2



Garage and storage room



**SALES &
INFORMATION**

+34 952 158 432
www.iseacalaceite.com



Developer: TORROX SPECIAL DEVELOPMENTS OPPORTUNITIES, S.L. - Calle Pediodista Pirula Arderius nº 4 - Alicante (03001) C.I.F.: Nº B-42.551.002
This plan is provisional and subject to any changes that may arise from licensing requirements or site management criteria, without compromising quality. This is a non-contractual document.