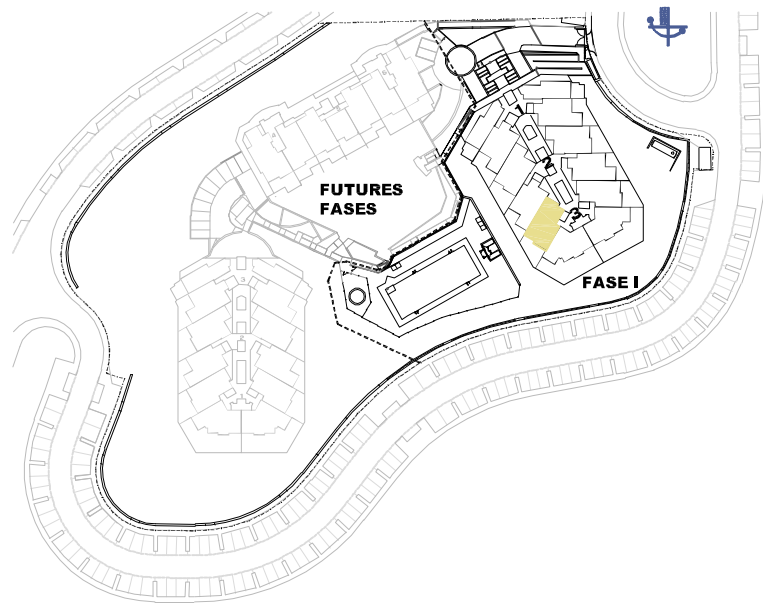


**ISEA**  
CALACEITE



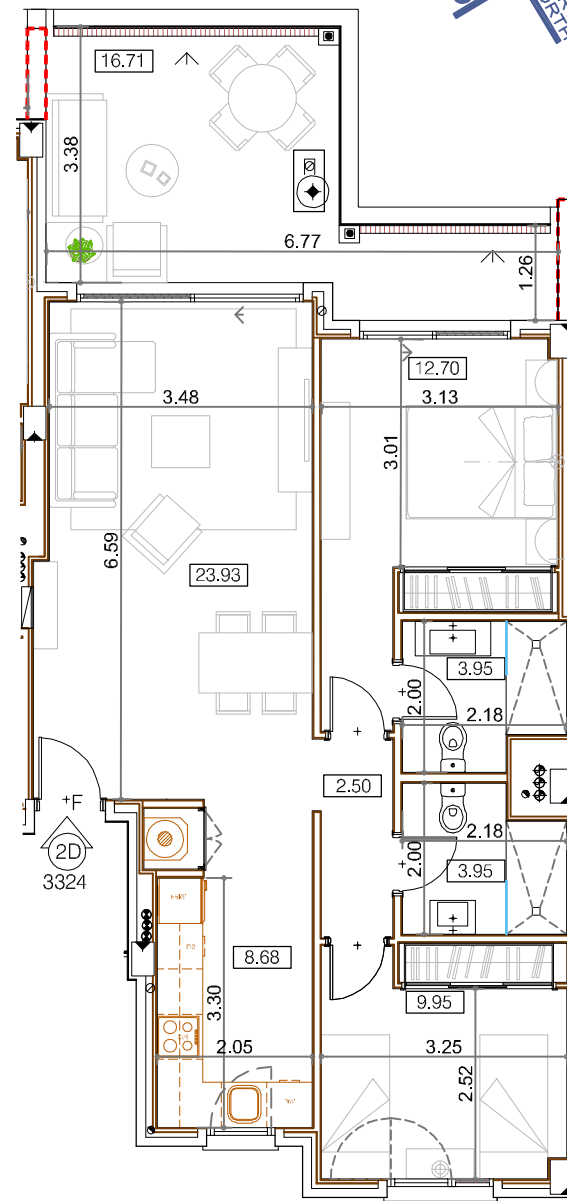
**Block 3 / Stair Label 3 / Floor 2 / Door 3324**

According to decree 218/05

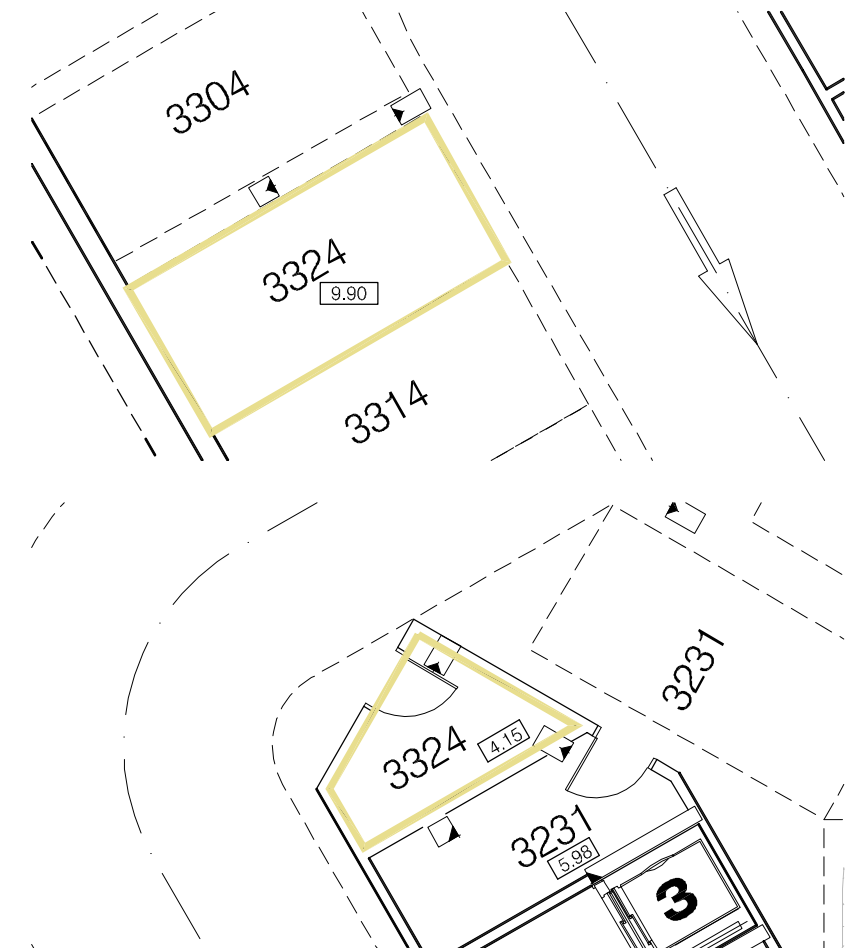
Enclosed Built Area Sup. Construida Cerrada	76,19 sqm/m2
Terrace Built Area Sup. Construida Terraza	19,38 sqm/m2
Common Areas Built Area Sup. Construida Zona Común	9,96 sqm/m2
Usable Area Sup. Util Vivienda	72,23 sqm/m2

# APARTMENT 3324

## TYPE F / 2 BEDROOMS



### Garage and storage room



**SALES &  
INFORMATION**

**+34 952 158 432**  
**www.iseacalaceite.com**



Developer: TORROX SPECIAL DEVELOPMENTS OPPORTUNITIES, S.L. - Calle Pediodista Pirula Arderius nº 4 - Alicante (03001) C.I.F.: Nº B-42.551.002  
This plan is provisional and subject to any changes that may arise from licensing requirements or site management criteria, without compromising quality. This is a non-contractual document.